

EZFare



The EZFare Automatic Fare Collections Solution is a fresh and modern approach to innovative faring.

EZFare is designed to provide maximum cost savings and maximum ease of use from integration – training – operation – maintenance. Here's how:

- Improved fraud detection and advance device tracking = enhanced security and peace of mind;
- Best in class components = most reliable, cutting edge system available;
- Multiple electronic fare options = faster load times;
- Easy access 'tool-less', modular design = easy maintenance and customization and faster repair time;
- Open architecture and public application interface = easy integration;
- Central system interface = easy configuration of all devices;
- Comprehensive data tracking with simple point and click interface = extensive, user-friendly reports for decision makers;
- 24/7 customer support, on-site training and interactive online training = exceptional customer service

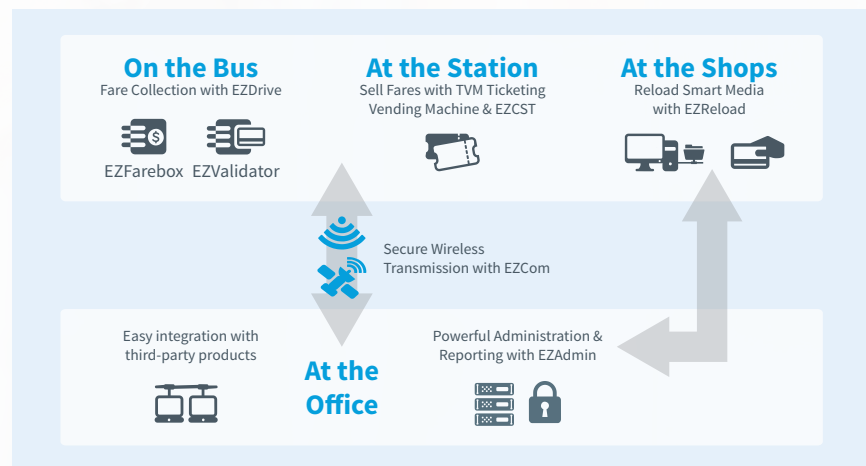
CONFIGURABLE SOLUTIONS

EZFare meets the core requirements of any transit agency, with the scalability to grow to meet future needs.

It is comprised of devices for buses and trains, transit stations, retail shops and the transit office that are easy to configure and easy to use.

On the Buses/Trains

- EZFarebox — processes currency and smart media and issues electronic transfers/day passes/change cards



EZFare is configurable to maximize on both your passenger experience and your back office needs.

- EZValidator cashless solution processes smart media for Paratransit and fixed-route services

At the Stations

- EZTVM — Ticket vending machines at transit stations to sell fares
- EZCST — Sell, reload and personalize smart, and barcode media

At the Retail Shops

- EZReload — An attended device used at a remote retail location to reload smart media products

At the Office

- EZAdmin — Web-based administration application to configure all EZFare devices, monitor status and provide data-rich reports from all devices

TRAPEZE GROUP

Trapeze Group works with public transit agencies and their communities to develop and deliver smarter, more effective public transit solutions. For more than 25 years we have been Here for the Journey, evolving with our customers around the world to helping them move people from point A to Z, and everywhere in between.

info@trapezegrup.com

US +01 319 743 1000

Canada +01 905 629 8727

UK +44 0 8445 616 771

Switzerland +41 58 911 11 11

India +91 98104 07444

Australia +617 3129 2092

www.trapezegrup.com